

# Scaling & Saving Images

**SCALE** \_\_\_\_\_ **you capture the image.** This is vital, so...



### If Scanning:

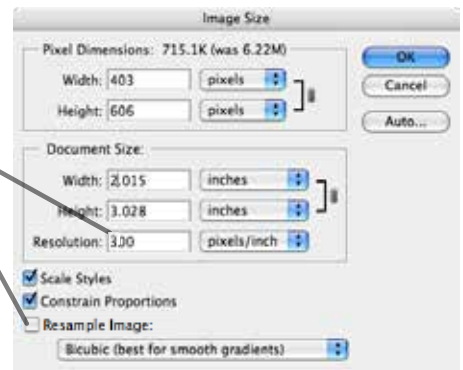
1. Face image down. Open "Epson Scan" or "Image Capture (on Mac HD > Applications)
2. Click professional mode (if it's an option)
3. Click "Preview". Next loosely **crop** image to remove most of the unused parts.
4. Set at 300 p.p.i. (also known as d.p.i.–dots per inch).
5. **Scale it. Enlarge or reduce it by the correct percent.**  
Divide **d**esired size by **o**riginal size (**d.o.**). If result were say "2.5", then "250%".
6. Click "Scan". You'll find your image under Macintosh HD > Student number > Pictures



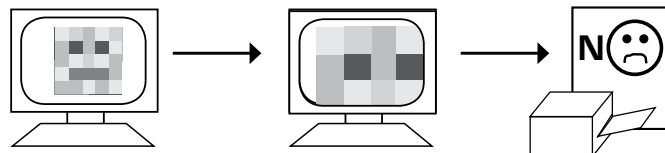
↓ DOWNLOAD

### If Photographing or Downloading:

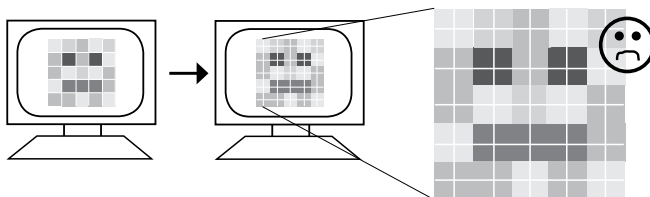
1. Capture at high enough resolution (p.p.i.). Better too much than too little. If needed, reduce it later.
2. Open in photoshop.
3. Under Image > Image Size > Input right p.p.i.  
*If enlarging p.p.i. must click OFF "resample image".*
4. Reduce width and height to 100% of final print size. Don't make it too small as you should not enlarge after it's been captured.



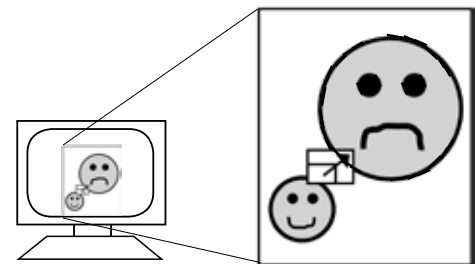
Should you enlarge a raster image size *after* it's initially captured?



What happens if you enlarge in programs *after* initial capture?



**PHOTOSHOP:** You'd gain pixels but \_\_\_\_\_



**INDESIGN:** You'd negatively change the \_\_\_\_\_

# Scaling & Saving Images

**SAVE photoshop files in correct \_\_\_\_\_ Mode & \_\_\_\_\_ Formats.  
Name them correctly as well.**

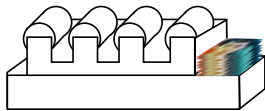
1. Open your captured image(s) in photoshop.



2. For color mode you want to be certain your images are in CMYK color mode.

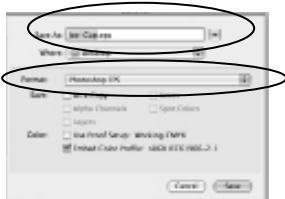
*This will assure your image is composited from the 4 separations needed for a 4-color press.*

Image > mode > CMYK.



3. A native "photoshop format" file could be pulled into InDesign as well as either an "Photoshop PDF", "EPS" or "TIFF" format. To do this, with the file open go under

File > Save as > Format



4. Good file naming & organization are vital. Name file with descriptor (i.e. "Sailboat Drawing.psd")

**REVIEW +** A Vector image easily scales larger at any time.

A Pixel image (a.k.a. Raster) needs all its info captured initially.

- 2 x L.P.I. = D.P.I.      • Scale it when you capture it
- Correct Color Mode for this is CMYK (not RGB or Solid)
- Correct file format for print images pulled into InDesign are "PSD", "PDF", "Eps" or "Tiff"
- Carefully name and organize your files
- Package your project